

Morrisville Stirrup Iron Creek Greenway

Proposed Greenway Alignment Alternatives



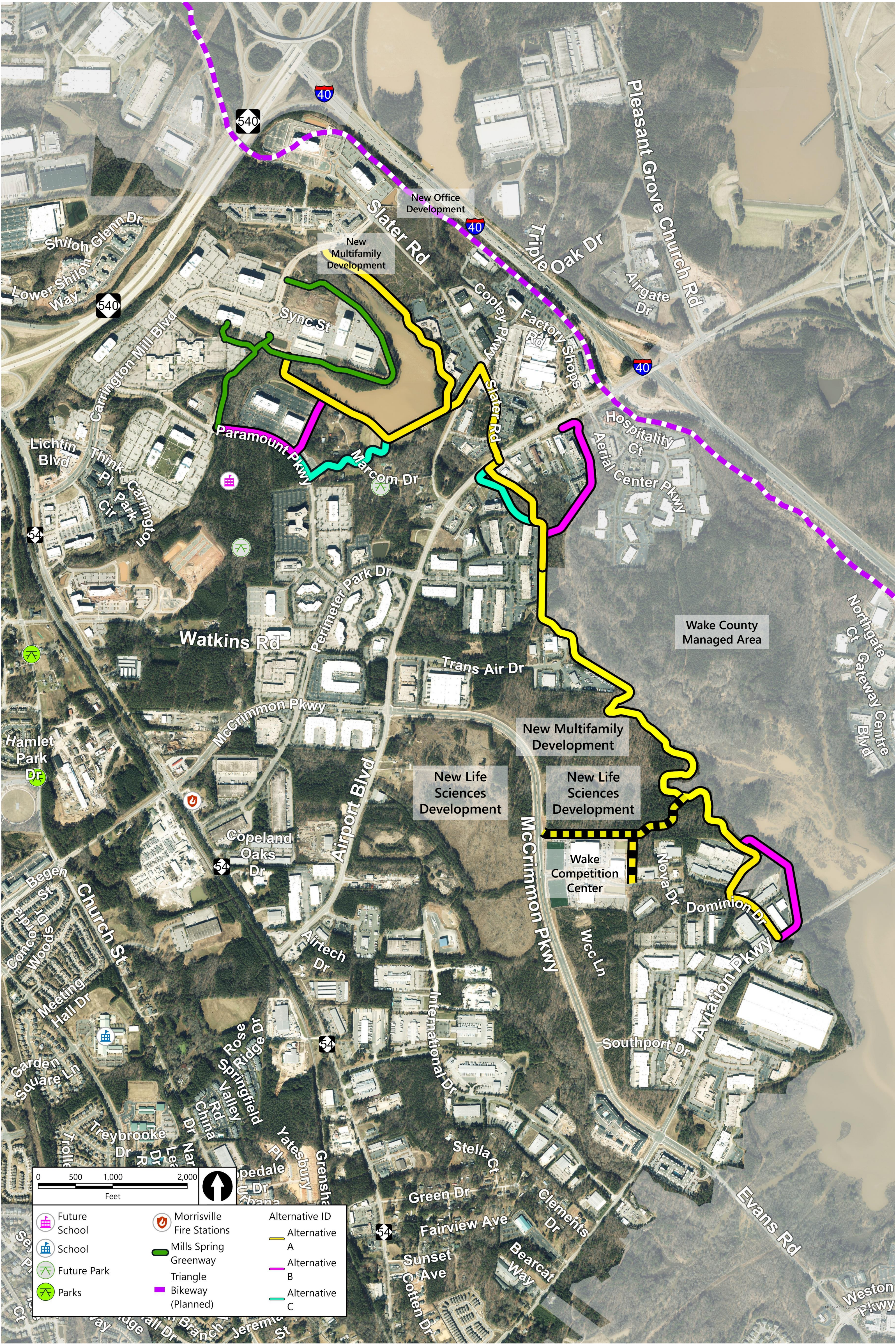
Greenway or Shared Use Path

Greenways are a type of shared use path facility that typically follow streams or nature corridors, away from major roadways



Sidepath (along a Roadway)

A Sidepath is a shared use path that follows a roadway corridor, separated by a green buffer strip



The map above details three draft preliminary alignments for Morrisville's Stirrup Iron Creek Greenway (yellow, pink and cyan lines) as well as connection opportunities to Mills Spring Greenway (green line) to the north. The map also displays several upcoming developments and community resources. Morrisville's Stirrup Iron Creek Greenway aims to link new developments and existing destinations alike. Please scan the QR code to the left, or click the link to visit the survey at <https://www.surveymonkey.com/r/DTS39KY>